

Tabella "A"

(strade con carreggiate fino a mt 4.00)

LEGENDA:

- ##### area di scavo;
- ▒ area di ripristino.

fig. A1 Scavo longitudinale alla carreggiata

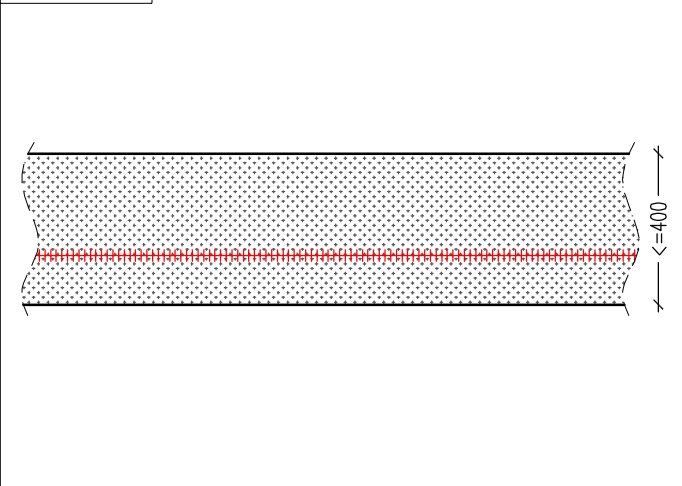


fig. A2 Scavo trasversale alla carreggiata

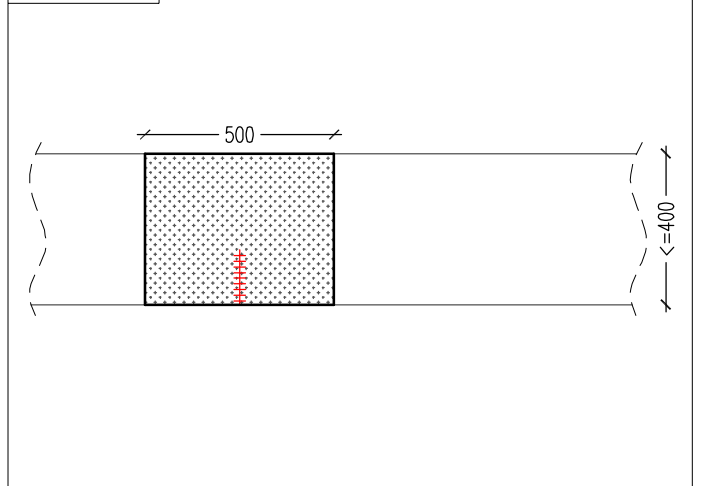


fig. A3 Scavo trasversale alla carreggiata

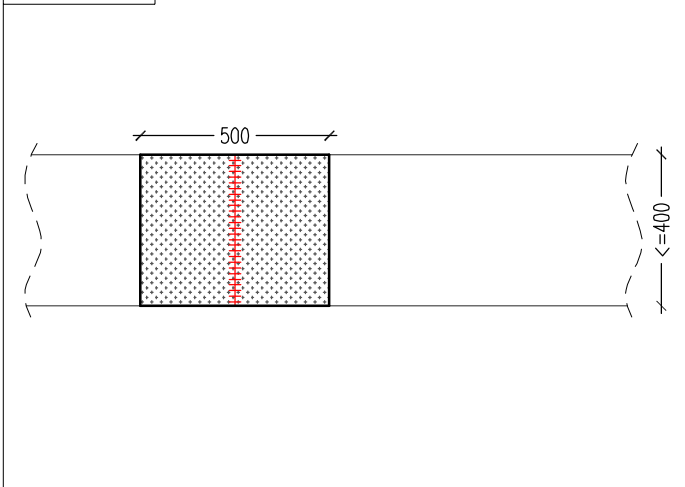


fig. A4 Doppio scavo trasversale alla carreggiata

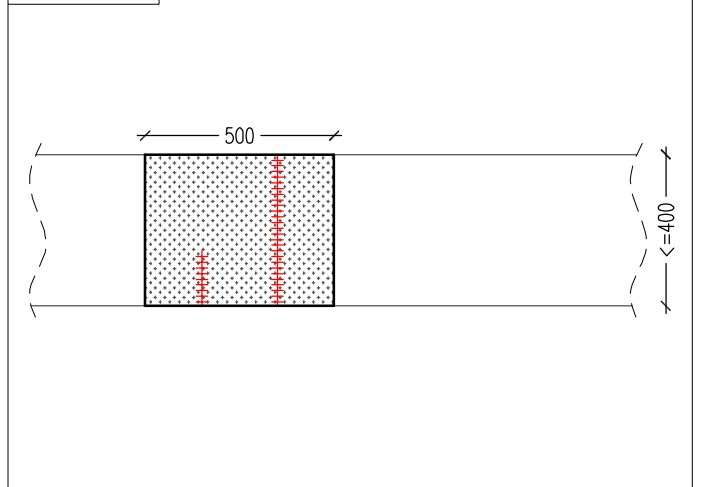


fig. A5 Scavi multipli

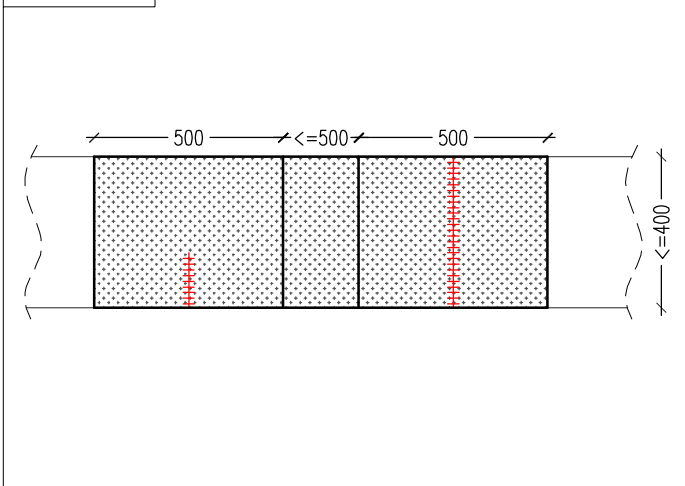


fig. A6 Scavi multipli

